

HANDHELD SCANNERS

Product Group Guide



HANDHELD SCANNERS

Datalogic's Handheld Scanner product line offers products and solutions for automatic data capture and factory automation throughout the customer's entire value chain in the Retail, Manufacturing, Transportation & Logistics and Healthcare industries.

The wide range of general purpose handheld readers offer a variety of choices for most data collection activities. Product sets propose corded and cordless options together with best in class reading technologies, ready to solve current and future needs and applications.

Datalogic's PowerScan industrial handheld readers are data collection's definitive example of ruggedness and durability, coupled with outstanding performance and unyielding reliability.



RETAIL



- Point of Sale Check-out
- Shelf Replenishment
- Price Checking
- Store Inventory
- Goods Receiving
- Postal, Bank, Utilities,
- Public Administration
- Access Control, Entertainment



MANUFACTURING



- Manufacturing Shop Floor
- Component Traceability
- Work-in-Progress
- Sub-Assembly
- Quality Control
- Time and Cost Analysis
- Control Machines Set-up
- In-line Inventory Control

TECHNOLOGIES

- Linear and area imaging technology for 1D and 2D barcodes
- Megapixel performance and distinctive white-illumination technology
- Bluetooth® and Datalogic's STAR Cordless System™ radio connectivity
- Datalogic's exclusive 3GL™ (3 Green Lights) and 'Green Spot' technology
- Great ergonomics and cutting edge design
- Rugged enclosures; Durable and reliable
- Healthcare models with Disinfectant-Ready enclosures and anti-microbial additives
- Wireless battery charging system
- Adjustable position cradle with scan-while-charging capability
- Smart battery management



T&L



- Shipping / Receiving
- Parcel Preparation
- Picking / Put Away
- Automatic Sorting Back-Up
- End of Line Sorting

HEALTHCARE



- Bedside Care
- Admittance
- Clinical Lab
- Surgical tool tracking
- Blood bank
- Pharmacies

CORDLESS FEATURES	
CONTACT	0 to 5 cm / 0 to 2 in
INSTINCTIVE	0 to 30 cm / 0 to 12 in
DISTANCE	0 to 100 cm / 0 to 39 in
LONG RANGE	0 to 250 cm / 0 to 98 in
AUTO RANGE	Up to 10 m / 3 ft

GENERAL		
TD1100 FAMILY	HERON™ FAMILY	
		
TD11XX	HD31XX	HD34XX
The TD1100 series of linear imagers are a cost-effective solution for users who require close contact bar code reading. Used in Retail, Services, Banking, etc.	The Heron HD3100 is a linear imager bringing high style and modern technology to the point-of-sale. Available in a 'carbon-fiber' or 'silver' design.	The Heron HD3430 2D area imager brings elegance with advanced 2D reading technology to the modern point-of-sale. Available in a 'carbon-fiber' or 'silver' design.

APPLICATIONS			
Retail	X	X	X
Manufacturing		-	-
Transportation & Logistics	X	-	-
Healthcare	-	-	-





FEATURES			
Reading Technology	Linear Imager	Linear Imager	Area Imager
Reading Range	Contact/Instinctive	Instinctive	Instinctive
Aiming System	Scan Line	Scan Line	4-Dot / Center Cross Aimer
Wide Scan Angle	-	X	-
Host Interface	RS-232 / USB / Keyboard Wedge / Wand Emulation	RS-232 / USB / Keyboard Wedge	RS-232 / USB / Keyboard Wedge

DATA CAPTURE			
Barcodes	1D	1D	1D and 2D
Direct Part Marked (DPM) Codes	-	-	-
Digital Watermarks	-	-	-
Image Capture	-	-	X
Reads from Smartphone or screen displays	X	X	X
Datalogic's 'Green Spot' Technology	-	X	X

RUGGEDNESS / DURABILITY			
IP Rating (Particulate and Liquid Sealing)	IP30	IP40	IP40
Drop to Concrete	1.5 m / 5.0 ft	1.5 m / 5.0 ft	1.5 m / 5.0 ft
Factory Warranty	5 Years	5 Years	5 Years

CORDLESS FEATURES			
Wireless Technology (STAR / Bluetooth)	-	-	-
Wireless Range - Travel Distance from Base	-	-	-
Display / Keypad for 2-Way Communication	-	-	-
Batch Mode Capability	-	-	-
Battery Type	-	-	-
Battery Life - Scans Between Charge	-	-	-
Scan While Charging	-	-	-

PURPOSE HANDHELD READERS

RIDA™ FAMILY	QUICKSCAN™ FAMILY		
			
RIDA	21XX	24XX	25XX
The DBT6400 is a cordless area imager with Bluetooth® technology in a pocket-sized form factor. Available in a Standard or Healthcare model.	The QuickScan 21XX series is a linear imager featuring an extra-wide field of view for reading long bar codes. Available in Desk, Bluetooth® and Mobile (STAR radio) versions.	The QuickScan 24XX series are 2D area imagers with a distinctive illumination and aiming system. Available in Desk, Bluetooth® and Mobile (STAR radio) versions.	The QuickScan 25XX series are 2D area imagers providing best-in-class reading performance and snappiness, high reliability and full guidance with extreme precision aiming system.
X	X	X	X
-	X	-	X
-	-	X	X
X	-	-	X
Area Imager	Linear Imager	Area Imager	Area Imager
Instinctive	Instinctive	Instinctive	Instinctive
4-Dot Aimer	Scan Line	Two Blue Triangles	Two Blue-LED Triangles
-	X	-	-
USB (with BC6020 only)	RS-232 / USB / Keyboard Wedge / OEM (IBM) USB	RS-232 / USB / Keyboard Wedge / OEM (IBM) USB	RS232 / USB / USB-C / Keyboard Wedge
1D and 2D	1D	1D and 2D	1D and 2D
-	-	-	-
-	-	-	X
X	-	-	X
X	X	X	X
X	X	X	X
IP52	IP42	IP42	IP52
1.5 m / 5.0 ft	1.5 m / 5.0 ft	1.5 m / 5.0 ft	1.5 m / 5.0 ft
3 Years	QD2131: 5 Years QBT2131: 3 Years QM2131: 3 Years	QD2430: 5 Years QBT2430: 3 Years QM2430: 3 Years	5 Years
Bluetooth® 4.0	Bluetooth® 3.0 Class 2 STAR 2.0: 433 MHz	Bluetooth® 3.0 Class 2 STAR 2.0: 433 MHz	-
25.0 m / 82.0 ft	25.0 m / 82.0 ft	25.0 m / 82.0 ft	-
			-
X	500 + Linear Codes	500 + Linear Codes	-
Li-Ion 700 mAh	Li-Ion 1400 mAh	Li-Ion 1400 mAh	-
	30,000 +	30,000 +	-
	QBT2131, QM2131	QBT2430, QM2430	-

	GENERAL PURPOSE HANDHELD READERS		WEARABLE SCANNERS
	GRYPHON FAMILY		HANDSCANNER™
			
	42XX	45XX	HANDSCANNER™
	The Gryphon 42XX linear imagers provide the best-in-class reading performance on 1D bar codes coupled with disinfectant ready enclosures and a unique wireless battery charging system. Available in Desk, Bluetooth and Mobile (STAR radio) versions.	The Gryphon 45XX 2D area imagers provide a new cutting edge design, coupled with disinfectant ready enclosures, megapixel optics and a unique wireless battery charging system. Available in Desk, Bluetooth®, Mobile (STAR radio) and Healthcare versions.	The HandScanner is the lightest and smallest 2D wearable scanner in the market that allows workers to use both hands to pick faster and expand productivity while reducing repetitive useless motions and errors
APPLICATIONS			
<i>Retail</i>	X	X	X
<i>Manufacturing</i>	X	X	X
<i>Transportation & Logistics</i>	X	X	X
<i>Healthcare</i>	X	X	X
FEATURES			
<i>Reading Technology</i>	Linear Imager	Area Imager	Area Imager
<i>Reading Range</i>	Distance	Distance	Instinctive / Distance
<i>Aiming System</i>	Soft line viewfinder	4-Dot/Center Cross Aimer	Dot led or Cross laser
<i>Wide Scan Angle</i>	-	-	-
<i>Host Interface</i>	USB type C / USB / RS-232 / Keyboard Wedge / IBM46XX available with accessory cable	RS-232 / USB / Keyboard Wedge / IBM46XX available with accessory cable	Bluetooth HID, USB Serial Port
DATA CAPTURE			
<i>Barcodes</i>	1D	1D, 2D and Dotcode	1D and 2D
<i>Direct Part Marked (DPM) Codes</i>	-	-	X
<i>Digital Watermarks</i>	-	X	-
<i>Image Capture</i>	-	X	X
<i>Reads from Smartphone or screen displays</i>	X	X	X
<i>Datalogic's 'Green Spot' Technology</i>	X	X	-
RUGGEDNESS / DURABILITY			
<i>IP Rating (Particulate and Liquid Sealing)</i>	IP52	IP52	Water and dust resistant
<i>Drop to Concrete</i>	1.8 m / 5.9 ft	1.8 m / 5.9 ft	Multiple drops from 2m
<i>Factory Warranty</i>	GD4200: 5 Years GBT4200, GM4200: 3 Years	GD4500: 5 Years; GBT4500, GM4500: 3 Years	1 Year
CORDLESS FEATURES			
<i>Wireless Technology (STAR / Bluetooth)</i>	Bluetooth® 4.0 STAR: 433 or 910 MHz	Bluetooth® 4.0 STAR: 433 or 910 MHz	Bluetooth Low Energy 4.0
<i>Wireless Range - Travel Distance from Base</i>	BT: Up to 100 m / 328 ft STAR: Up to 50 m / 164 ft	BT: Up to 100 m / 328 ft STAR: Up to 50 m / 164 ft	Using generic host device: Up to: 40 m (131 ft) Using HandScanner Gateway: Up to: 70 m (230 ft)
<i>Display / Keypad for 2-Way Communication</i>	-	-	-
<i>Batch Mode Capability</i>	X	X	-
<i>Battery Type</i>	Li-Ion 2550 mAh	Li-Ion 3250 mAh	Li-Ion 670 mAh
<i>Battery Life - Scans Between Charge</i>	GBT, GM: 80,000+	GBT, GM: 80,000+	10.000
<i>Scan While Charging</i>	GBT, GM with WLC4090 base station	GBT, GM with WLC4090 base station	-

INDUSTRIAL HANDHELD READERS

POWERSCAN™ FAMILY

POWERSCAN™ 9600



91XX

95XX

95XX RETAIL

96XX

The PowerScan 91XX linear imagers introduce a new green scanning line for outstanding 1D data collection. Available in Desk, Bluetooth® and Mobile (STAR radio) versions.

The PowerScan 95XX area imagers include omnidirectional reading with outstanding optical characteristics. Available in Desk, Bluetooth®, Mobile (STAR radio) and DPM versions.

The durability of the PowerScan imagers are now available for the Retail sector. Available in Desk, Bluetooth® and Mobile (STAR radio) versions.

The PowerScan 96XX imagers have an ultra-rugged design, an ergonomic shape with well-balanced weight and an intuitive aiming system. Available in Desk version and Cordless version with Datalogic's STAR Cordless System™ 2.0 proprietary radio.

X

X

X

X

X

X

X

X

X

X

X

X

-

X

-

X

Linear Imager

Area Imager

Area Imager

Area Imager

Distance

Instinctive / Distance
Auto Range
DPM Models:
Contact / Instinctive

Instinctive / Distance

Instinctive / Distance

Laser-like Line

Frame Aimer/Center Cross

4-Dot/Center Cross Aimer

Frame Aimer/Center Cross

-

X

-

X

RS-232 / USB / Keyboard Wedge / Ethernet / Industrial Fieldbus

RS-232 / USB / Keyboard Wedge / Ethernet / Industrial Fieldbus

RS-232 / USB / Keyboard Wedge

RS-232 / USB

1D

1D and 2D

1D and 2D

1D, 2D and Dotcode

-

DPM Model

-

-

-

-

X

X

-

X

X

X

X

X

X

X

X

X

X

X

IP65

IP65

IP65

IP65 and IP67

2.0 m / 6.6 ft

2.0 m / 6.6 ft

2.0 m / 6.6 ft

2.5 m / 8.2 ft

3 Years

3 Years

3 Years

3 Years

Bluetooth® 3.0
STAR: 433 or 910 MHz

Bluetooth® 3.0
STAR 2.0: 433 or 910 MHz

Bluetooth® 3.0
STAR: 433 or 910 MHz

STAR: 433 or 910 MHz

BT: Up to 100 m / 328 ft
433: Up to 100 m / 328 ft
910: Up to 400 m / 1,312 ft

BT: Up to 90 m / 295 ft
433: Up to 120 m / 393 ft
910: Up to 220 m / 721 ft

BT: Up to 90 m / 295 ft
433: Up to 80 m / 262 ft
910: Up to 130 m / 426 ft

433: Up to 150 m / 492 ft
910: Up to 230 m / 754 ft

PM9100

PM9500

PM9500 Retail

PM9600

X

X

X

X

Li-Ion 3350 mAh

Li-Ion 3350 mAh

Li-Ion 3350 mAh

Li-Ion 3350 mAh

PBT: 80,000 + / PM: 60,000 +

60,000 +

PBT: 60,000 + / PM: 60,000 +

PM: 80,000

-

-

Vertical Cradle

-

FOCUS ON THE NEW POWERSCAN 9600

The PowerScan family of barcode readers is the ultimate industrial handheld scanners, designed and constructed to withstand the toughest environmental conditions.

The new **PowerScan 9600** scanners – available in corded or cordless models – are designed to enhance productivity and efficiency through best-in-class scanning performances and a reduced total solution cost.

The new PowerScan 9600 Series complements Datalogic's leading range of industrial scanners, readers, data capture and process automation devices, which are enabling Industry 4.0 initiatives worldwide.



ULTRA-ROBUST DESIGN

New ultra-robust design and top-class IP ratings. The new PowerScan 9600 is designed to resist more than 50 drops at 2.5 m / 8.2 ft and is sealed to IP67 and IP65.



CENTER OF GRAVITY DESIGN

The new scanner has a well-balanced weight reducing fatigue on the operator's wrist.



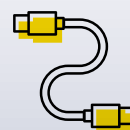
INDUCTIVE, CONTACTLESS CHARGING TECHNOLOGY

Battery contacts and pins often get dirty, bent, or broken. Wireless charging technology removes a key point of failure in Industrial and Retail functions.



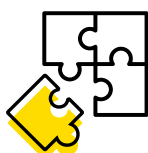
CONNECTIVITY

USB and RS-232 Multi-interface, Ethernet and Industrial Ethernet embedded. Easy system integration.





MODULARITY



Modular design allows interface expansion to both cordless and corded devices.

DESIGNED FOR MOBILITY



The Datalogic STAR radio is a narrow band two-way radio that allows no interference with existing systems like Wi-Fi or Bluetooth®.



RADIO RANGE HIGH/LOW SPEED TO OPTIMIZE TX SPEED/RANGE



The new antenna design allows the user to reach twice the radio range with respect to the existing PowerScan 9500 series.

OLED DISPLAY



New OLED display with selectable dark on white or white on dark backgrounds for better visibility.





© 2022 Datalogic S.p.A. and/or its affiliates. • All rights reserved. Without limiting the rights under copyright, no part of this documentation may be reproduced, stored in or introduced into a retrieval system, or transmitted in any form or by any means, or for any purpose, without the express written permission of Datalogic S.p.A. and/or its affiliates. • Datalogic and the Datalogic logo are registered trademarks of Datalogic S.p.A. in many countries, including the U.S. and the E.U. • PowerScan, QuickScan, Gryphon and Heron are trademarks of Datalogic S.p.A. and/or its affiliates, registered in many countries, including the U.S. and the E.U. • RIDA and Datalogic STAR Cordless System are trademarks of Datalogic S.r.l. and/or its affiliates. • The Bluetooth word mark and logos are trademarks owned by Bluetooth SIG, Inc. and any use of such marks by Datalogic Group companies is under license. • All other trademarks and brands are property of their respective owners. • Product specifications are subject to change without notice. • PG-HH-EN Revision F 20220215

www.datalogic.com